



# DATA LITERACY FOR MASTER LEVEL AT THE UNIVERSITY OF HELSINKI

ECIL 2023 Krakow 11.10.2023

Tuija Korhonen, Katri Larmo, Tiina Heino, Maija Paavolainen

Helsinki University Library

Finland

KUVA: JUSSI MÄNNISTÖ



# OUTLINE FOR TODAY

- Data literacy in higher education
- University of Helsinki context
- Issues to address
- Our solutions
- Feedback so far



PHOTO BY VEIKKO SOMERPURO

# DATA LITERACY IN HIGHER EDUCATION

- Students doing independent research projects or reusing existing data
- Understanding of data citation and management
- **Transferable skill that will greatly benefit students when they enter the workforce.**
- Systematic data management guidance in all levels: undergraduate, graduate and Master level.





# UNIVERSITY OF HELSINKI IN BRIEF

1640

FOUNDED

674

M€ TURNOVER

131

STUDY PROGRAMMES

8 935

DEGREES PER YEAR

8 100

STAFF

31 600

DEGREE STUDENTS

56 555

OPEN UNIVERSITY AND  
CONTINUING EDUCATION  
STUDENTS

200 000

ALUMNI AROUND THE WORLD





# 4 CAMPUSES 11 FACULTIES

**CITY CENTER CAMPUS**  
**21 000 STUDENTS**  
FACULTY OF ARTS  
FACULTY OF EDUCATIONAL SCIENCES  
FACULTY OF LAW  
FACULTY OF THEOLOGY  
FACULTY OF SOCIAL SCIENCES

**KUMPULA CAMPUS**  
**6 000 STUDENTS**  
FACULTY OF SCIENCE

**MEILAHTI CAMPUS**  
**3 000 STUDENTS**  
FACULTY OF MEDICINE  
UNIVERSITY HOSPITAL HUH/HUS

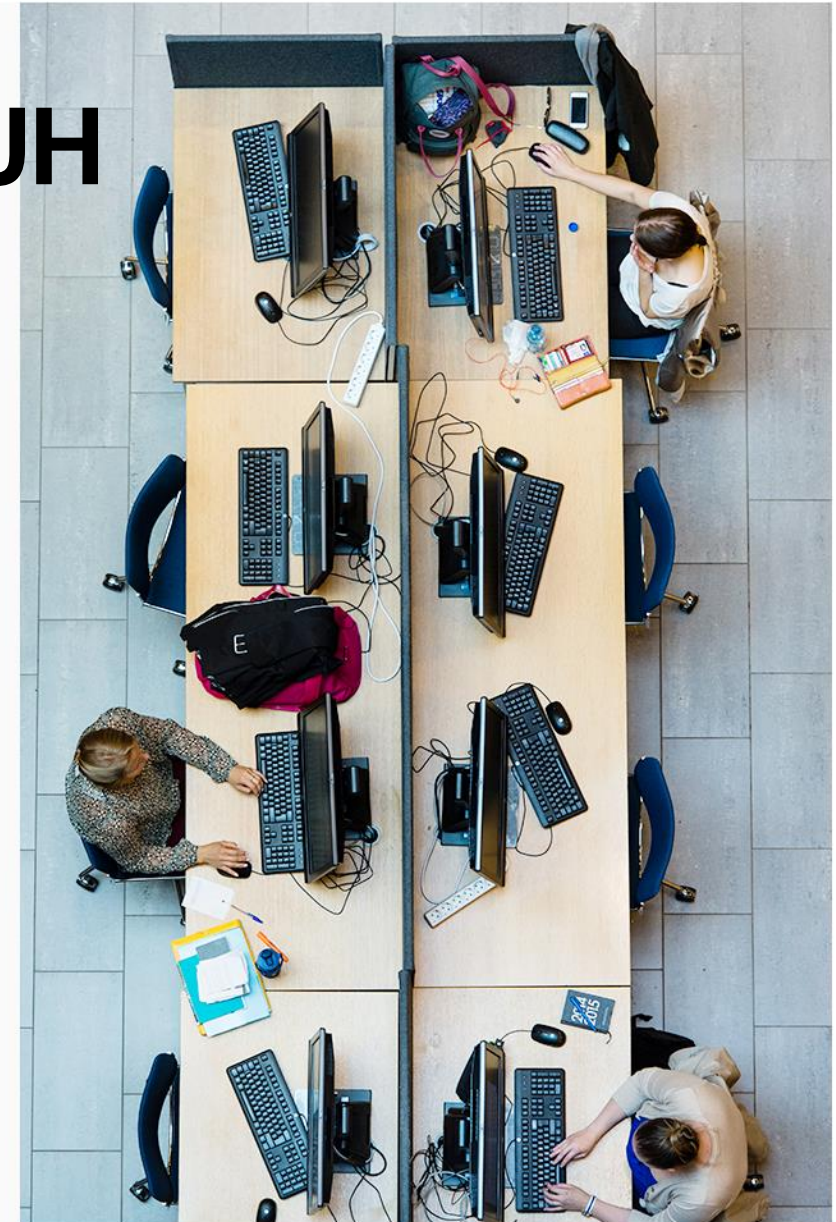
**VIIKKI CAMPUS**  
**6 500 STUDENTS**  
FACULTY OF BIOLOGICAL AND ENVIRONMENTAL SCIENCES  
FACULTY OF VETERINARY MEDICINE  
FACULTY OF PHARMACY  
FACULTY OF AGRICULTURE AND FORESTRY



# RESEARCH DATA SUPPORT AT UH

## [University of Helsinki Research Data Policy](#)

- [datasupport@helsinki.fi](mailto:datasupport@helsinki.fi)
- Data Support Network
- Data management specialists at the Helsinki University:
  - Library
  - IT Services
  - Research Affairs
  - Legal Affairs
- <https://www.helsinki.fi/en/research/services-researchers/data-support>



# RDM TOOLS AND SERVICES

## Data management planning

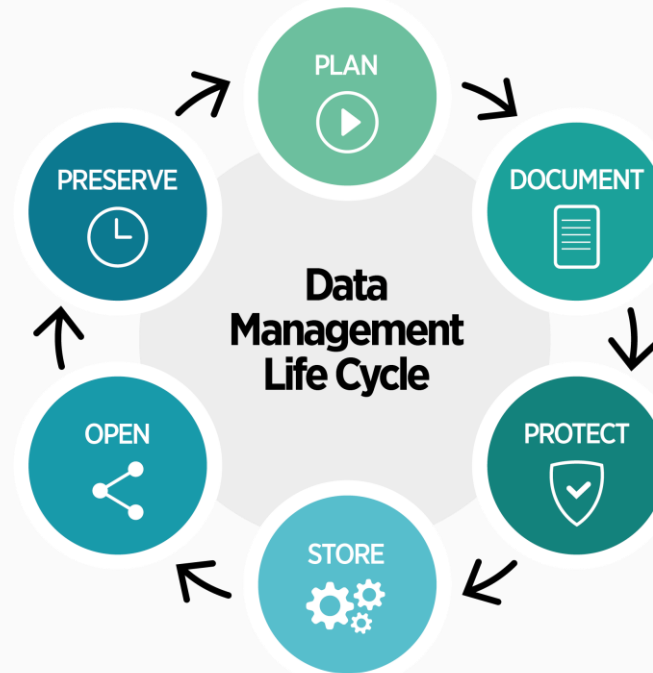
- DMP review service
- An online tool for data management planning [DMPTuuli](#)

## Teaching and training

- [Courses & Workshops](#)
- Webinars and other events

## Long term preservation of research data

- Consultation for suitable preservation solutions
- UH's own [PAS](#) service (piloting phase)



## Data collection

- Documentation & metadata [guide](#)
- Electronic data capture software for sensitive data: [REDCap](#)

## Open your research outputs with PIDs

- Consultation for suitable opening and publishing solutions
- Data publishing tool: EUDAT – [HY-B2SHARE](#)
- DOIs for UH research data infrastructures [DataDOI](#)

## Legal services

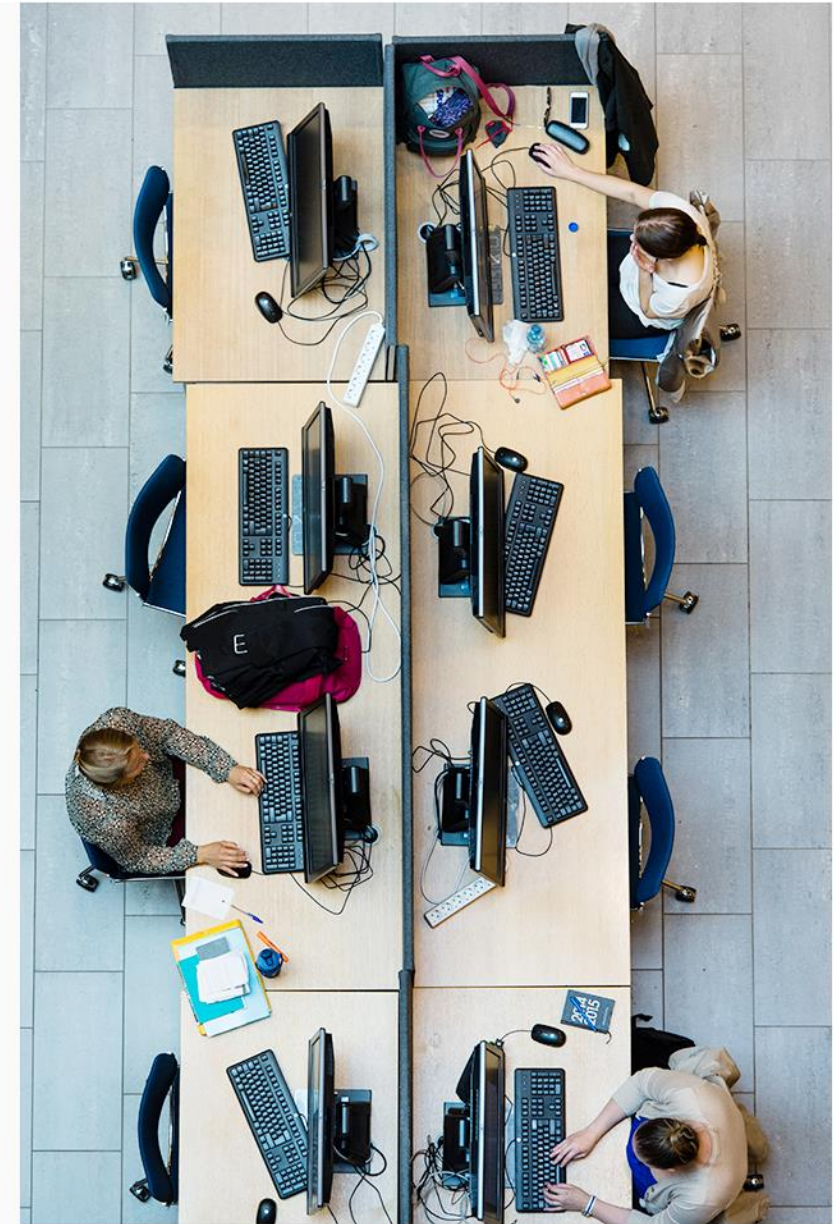
- Technical Data protection services
- Consultation on ethical issues

## IT and storing solutions with automatic backup

- Consultation for suitable storing solution
- Online data storage: EUDAT – [FI.B2DROP](#)
- Sensitive data storage – [UMPIO](#)
- Support for [CSC](#) Services

# DEVELOPMENT OF DATA SUPPORT AT THE LIBRARY

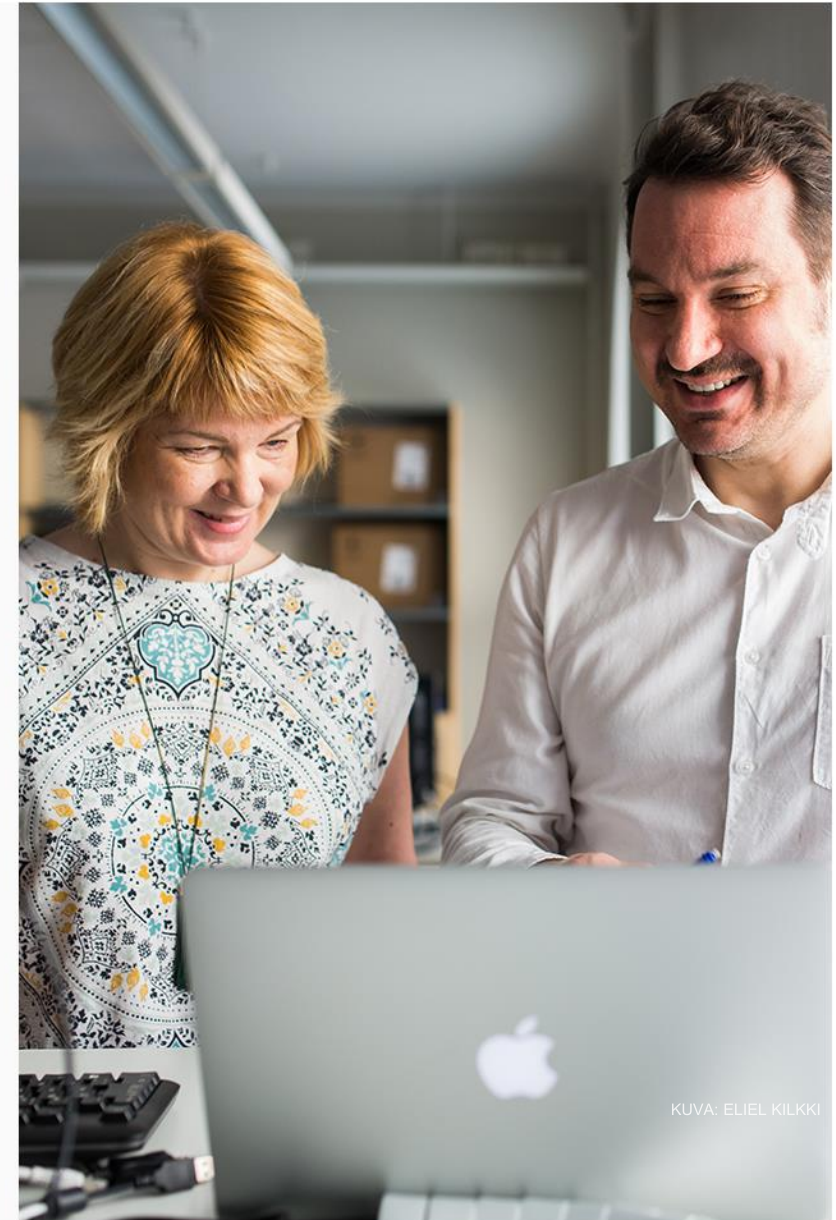
- Library's data management team 2009 -
- Teaching RDM started for doctoral researchers 2014
- Teaching of data management planning and other skills for researchers 2017-
- **So far**, the education has reached researchers and administrative staff
- GDPR 2018: the demand for data management education for all levels





# ISSUES TO ADDRESS

- The scale of undergraduate students
- Embedded in thesis seminars?
- Academics reluctant to take on new responsibilities
- How to start handling personal data according to **GDPR** requirements right from the start





# OUR SOLUTIONS

Self-study  
material

Personal  
data test

Teaching  
pilot with  
faculty

Introductory  
wizard

DMP  
template for  
students



# SELF STUDY MATERIAL

- Material for undergraduates and teachers in Finnish, English and Swedish (template only in Finnish at the moment, personal data test in Finnish and English)
- Shareable and linked to other undergraduate courses

<https://libraryguides.helsinki.fi/datamanagement>

## Topics of this guide

Guidance focuses on the following key topics:



What do your data comprise?



What if your material contains personal data?



Where should you store your data?



How do you organize and document your data?



Where do your data end up?



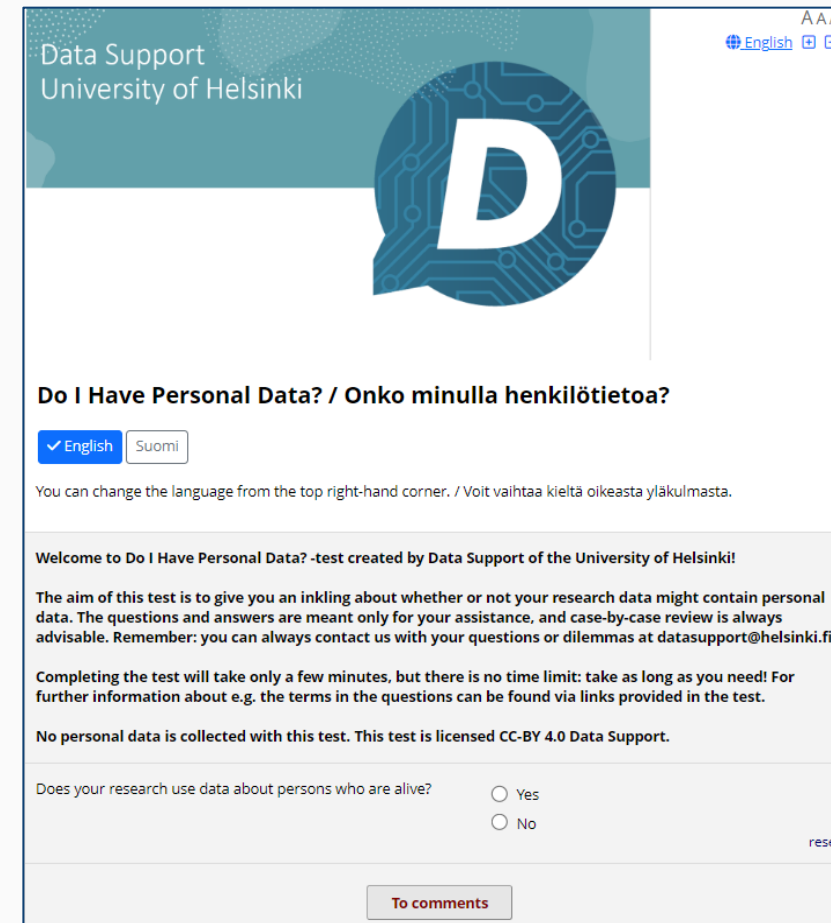
Help and tools



# PERSONAL DATA TEST QUIZ

- GDPR is a challenge for students and researchers alike
- Aims at learning to recognize personal information

<https://redcap.helsinki.fi/redcap/surveys/?s=7PJWAYXTFJTCCRTA>



The screenshot shows the interface of a quiz titled "Do I Have Personal Data? / Onko minulla henkilötietoa?". The header includes "Data Support University of Helsinki" and a large blue speech bubble with a white letter 'D'. The language is set to English. The quiz content includes a welcome message, the purpose of the test, completion instructions, and a question: "Does your research use data about persons who are alive?" with radio buttons for "Yes" and "No". A "reset" link and a "To comments" button are also visible.

Data Support  
University of Helsinki

English

## Do I Have Personal Data? / Onko minulla henkilötietoa?

English Suomi

You can change the language from the top right-hand corner. / Voit vaihtaa kieltä oikeasta yläkulmasta.

Welcome to Do I Have Personal Data? -test created by Data Support of the University of Helsinki!

The aim of this test is to give you an inkling about whether or not your research data might contain personal data. The questions and answers are meant only for your assistance, and case-by-case review is always advisable. Remember: you can always contact us with your questions or dilemmas at [datasupport@helsinki.fi](mailto:datasupport@helsinki.fi)

Completing the test will take only a few minutes, but there is no time limit: take as long as you need! For further information about e.g. the terms in the questions can be found via links provided in the test.

No personal data is collected with this test. This test is licensed CC-BY 4.0 Data Support.

Does your research use data about persons who are alive?  Yes  No

reset

To comments



# TEACHING PILOT WITH FACULTY

- Open Science practices in general together with library pedagogical and OA experts and the faculty
- Simple assignments aiming at learning to recognize and verbally describe research data sets

<https://wiki.helsinki.fi/display/hulibtuda/Farmasian+kv-maisteriohjelman+luennot+2022>

## Pre-assignment for the data management lecture (22nd Nov)

Get familiar with the data produced in your hosting research group.

Some questions:

1. How researchers in the group have collected or produced the data. Or was the data already existing, which means it is reused data?
2. What kind of data the group has: e.g. tables, text, audio, video, surveys, codes? Which methods or machines are used for producing data?
3. What kind of information does the data have?
4. Do data include personal or sensitive information? Check what personal and sensitive data means: <https://www.helsinki.fi/en/research/services-researchers/data-support/research-data-management#guidance-for-sensitive-data--title> ↗
5. Could someone in the group even show an example of what the dataset looks like?

# INTRODUCTORY WIZARD DEVELOPMENT UNDER WAY

<https://rdmintro.helsinki.fi/>

RDM Intro Home Login

Do you do research alone or in a group?

Alone

In a research group

Next

What sorts of people are included in the research group?

Only University of Helsinki personel

Personel from University of Helsinki and other Finnish universities

International collaboration within the EU

International collaboration where at least one partner is outside the EU

Next

Does your research group has a data policy or a data management plan (DMP) of its own?

Yes ⓘ

No ⓘ

I don't know ⓘ

Next

Do you produce the data yourself or do you re-use data that has been created previously? For example: do you conduct an interview by yourself (producing the data) or do you use interviews conducted by someone else (re-using the data)?

Yes

No

I don't know

Next



# FEEDBACK SO FAR

Teaching Pilot: very positive feedback both from the students and the teachers.

- Think Open Blog: Experiences of teaching open science – library and faculty working together

It is not necessarily easy to grasp the concept of material or data at the beginning of a master's degree course, but in this context, the students were able to get a very concrete answer to this question by finding out what kind of data is created and used in their own research group.

Personal Data Test Quiz:

- Great interest from other universities the personal data test quiz: requests for xml-copy => using the same model

Introductory Wizard:

- not yet launched for customers, but very promising and fruitful way to work together with the IT-experts and students for a common practical goal

## References

Bauder, Julia. *Teaching Research Data Management*. ALA Editions. Available from: American Library Association. 50 East Huron Street, Chicago, IL 60611, 2022.

Javier Calzada Prado and Miguel Ángel Marzal, “Incorporating Data Literacy into Information Literacy Programs: Core Competencies and Contents,” *Libri* 63, no. 2 (2013): 123–34, <https://doi.org/10.1515/libri-2013-0010>

Burress, T. 2022. Data Literacy Practices of Students Conducting Undergraduate Research. *College and Research Libraries* 83(3), ss. 434–451. doi: [10.5860/crl.83.3.434](https://doi.org/10.5860/crl.83.3.434).

Smits, D.A.B. ja Teperek, M. 2020. Research data management for master’s students: From awareness to action. *Data Science Journal* 19(1). Saatavissa: <https://www.scopus.com/inward/record.uri?eid=2-s2.0-85106864849&doi=10.5334%2fdsj-2020-030&partnerID=40&md5=387b83348a741146c3fb46eda6df251e>.



# Thank you!



@hulib



@HULib



@Helunilib



hulibvideot

# #HULIB

[www.helsinki.fi/kirjasto](http://www.helsinki.fi/kirjasto)

KUVA: TUOMAS UUSHEIMO

HELSINGIN YLIOPISTON KIRJASTO  
HELSINGFORS UNIVERSITETS BIBLIOTEK  
HELSINKI UNIVERSITY LIBRARY



11/10/2023

18